

WF 206  
San  
Ann Rep  
1919  
L2

MANITOBA SANATORIUM  
NINTH ANNUAL REPORT  
FOR THE YEAR ENDING  
DECEMBER 31st 1919 ∩ ∩ ∩  
INCLUDING THE AUDITORS'  
REPORT FOR THE YEAR  
ENDING NOVEMBER 30th,  
1919 ∩ ∩ ∩ ∩ ∩ ∩

SANATORIUM BOARD OF MANITOBA  
LIBRARY COPY \_\_\_\_\_



# MANITOBA SANATORIUM

— NINETTE, MANITOBA —



## NINTH ANNUAL REPORT

For the Year Ending December 31st,  
1919, with Auditors' Report for the  
Year Ending November 30th, 1919





**Nurses' Home (erected in Autumn of 1919)**



**Group of Sanatorium Youngsters**

# MANITOBA SANATORIUM

NINETTE, MAN.

---

## Board of Directors:

---

W. A. WINDATT, Esq., Chairman.  
 GORDON BELL, Esq., M.D., Vice-Chairman.  
 E. W. MONTGOMERY, Esq., M.D.  
 HON. J. W. ARMSTRONG.  
 E. L. DREWRY, Esq.  
 LT.-COL. S. W. PROWSE, C.A.M.C.  
 COL. R. M. SIMPSON, C.A.M.C.  
 J. McEACHERN, Esq.  
 MAJOR N. K. McIVOR.  
 LT.-COL. R. J. BLANCHARD, C.A.M.C.  
 D. C. COLEMAN, Esq.  
 A. E. WARREN, Esq.  
 J. C. McMILLAN, Esq., M.D.  
 ALLAN BOND, Esq.  
 JOHN YELLOWLEES, Esq.  
 CHARLES CANNON, Esq.

Secretary-Treasurer:  
 E. M. WOOD, Esq.

---

## CONSULTING STAFF:

Surgeons: NEIL J. MACLEAN, M.D., M.R.C.S. (Eng.), F.A.C.S.  
 JAMES GORRELL, B.A., M.D., C.M.  
 Eye, Ear, Nose and Throat Surgeon:  
 GEORGE W. FLETCHER, M.D., C.M.

## STAFF:

Medical Superintendent: DAVID ALEXANDER STEWART, B.A., M.D.  
 Medical Assistants: DUNCAN McRAE, M.D. (Jan. to April).  
 W. LESLIE, M.B. (Jan. to May).  
 A. P. McKINNON, M.D. (June to Nov).  
 J. R. GOOD, M.D. (June to Nov).  
 J. E. PRITCHARD, M.D. (Nov. to Dec).  
 Lady Superintendent: MISS EDITH LOUCKS, R.N.  
 Accountant: J. S. YATES.  
 Representative of D.S.C.R.: HARRY HENFREY.  
 Engineer: J. R. SCOTT.  
 Solicitor: J. A. MACHRAY.  
 Auditors: W. A. HENDERSON & CO., Chartered Accountants.



## REPORT OF THE MEDICAL SUPERINTENDENT

A change in the financial year of the Sanatorium by which it is made to end on November thirtieth instead of March thirty-first makes the current Financial Report one for eight months only, and makes possible the publication of the Annual Report much earlier in the year than heretofore. So far as medical reports are concerned the Sanatorium year is still the calendar year.

The outstanding feature of the financial statement is the increase in maintenance cost, which, without allowing for depreciation, has risen from \$2.26 per patient per day for the year ending March 31st, 1919, to \$2.59 for the year ending Nov. 30, 1919. As more fully stated in the report last year, such a rise in rates does not correspond altogether to the increased cost of all commodities but represents in part improved facilities and routine and more satisfactory work. For instance there has been a constant increase in the proportion of patients on full hospital care, which, it can be easily seen, is more costly than the ordinary ambulant routine.

It may be noted that of the 419 patients discharged during the year 123, or 29%, are classed as non-tuberculous. Of these, 57 were civilians, or 25% of all civilians discharged, and 66 military, or nearly 35% of all military patients discharged.

Among the civilian non-tuberculous patients the most common diagnosis was, "debility following acute respiratory disease." This was a very natural aftermath of the Influenza epidemic which began in October, 1918. A few—chiefly members of staff—were treated for Influenza, and coryza. Other non-tuberculous conditions were—empyema, endocarditis, psychoses, exophthalmic goitre, asthma, pleurisy and bronchitis.

Non-tuberculous conditions among the soldiers, it is interesting to note, were somewhat different. The largest number were classed as having bronchitis, chiefly sub-acute or chronic, and with or without definite emphysema. Among other conditions were bronchiectasis, pulmonary abscess, after-effects of gas poisoning, pleurisy with or without effusion, debility following acute respiratory disease, debility following severe wounds and anesthetics, empyema, coryza, chronic disease of antra and post-nasal sinuses, pyorrhoea alveolaris, unhealed wound sinuses, wounds of the chest and valvular disease of the heart.

The Sanatorium having received its first patients on May 24th, 1910, will, about the time this report is distributed, have completed ten years of work. By the end of 1919 nearly three thousand patients, including 637 soldiers, had been treated.

The beginnings in 1909 were small, and, in comparison with that of the present time, the equipment was primitive. Provision was made for only sixty patients, twelve of these of the Infirmary type. The original buildings were three—the administration building which housed the whole staff, some patients, and also the entire heating plant, and two pavilions.

The first summer was spent practically without a water supply, and the first winter, on account of many obstacles, including lack of equipment, was a very discouraging time.

In 1911 a cottage for patients was built by the Rev. Dr. C. W. Gordon.

In 1912 the Sanatorium was practically doubled by the building of an Infirmary—less than one-third of the present Infirmary—the two-storey King Edward memorial cottage which was given by the Daughters of the Empire, and by the removal of the heating plant and laundry from the main building to the nucleus of the present power plant.

In 1913 the new section of the Infirmary was put into use. In this year the first regular assistant to the Medical Superintendent, Dr. C. A. Baragar, then an under-graduate, began work, returning as a graduate the following year. During the college year of 1913-14 students of the graduating class came out voluntarily for visits of two weeks, two at a time, beginning thus what has been an important part of the teaching work of the Sanatorium. In all, up to the end of 1919 more than 130 students and young graduates have been in residence for an average term, including those who remained in staff positions, of seven weeks.

In 1914 the equipment of the Sanatorium and its facilities for work were considerably improved and the residence of the Medical Superintendent built in 1915.

In 1916 work was begun on an addition to the Infirmary. In 1917 this addition was completed and brought into use, and two military pavilions were built and occupied. The first soldier patient came to the Sanatorium in the fall of 1914; in 1915 there were 13; in 1916, 72; in 1917, 181.

In 1918 the need of much increased accommodation, especially of the hospital type, and of improved facilities, led to the adoption of a large building programme including an addition to the Administration Building, one more pavilion, a large new addition to the Infirmary, besides a building for Vocational Training. By the end of 1919 practically all these buildings were in use. A Nurses' Home, also was built in 1919.



The Sanatorium having grown large and complicated, it was considered by the Board unwise that the whole work of administration should be undertaken directly by the Medical Superintendent, and arrangements were made whereby a Business Manager should be associated with him in the purely business part of the administration. This arrangement will undoubtedly leave the Superintendent more free from detail in the general direction of the Sanatorium and with more time for closer supervision of the medical work. Mr. H. H. Phinney "took over" as Business Manager on Jan. 1st, 1920.

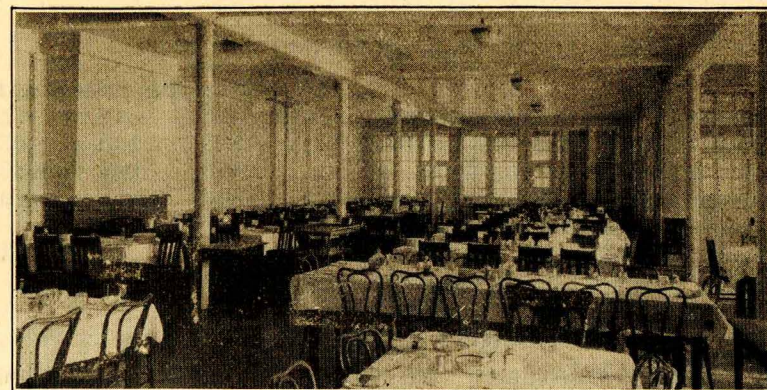
At the same time a more elaborate system of book-keeping and keeping of stores is being worked out.

In approaching the completion of its tenth year, the Trustees of the Sanatorium—six of whom have been continuously on the Board for the whole period—may well have some feeling of satisfaction in the development of a useful institution and the accomplishment of a large amount of work. It can be fairly said that the Sanatorium has a widespread influence throughout the province, and that it is in no small part due to this influence that conditions with regard to tuberculosis are very much more forward than they were ten years ago.

Just how large a Sanatorium should be cannot be determined as a general rule, but must be determined by the conditions in each special case. Before the Manitoba Sanatorium is considered entirely finished some little rounding out is necessary. A building is needed for the treatment of children, especially those with early disease; some facilities for heliotherapy; one or two residences for members of the staff, and still farther increase in Infirmary accommodation, which after all is the most useful and necessary part of the institution.

A model Sanatorium farm and dairy would be a most attractive feature and a definite asset.

DAVID A. STEWART,  
Medical Superintendent.



New Dining Room (which came into use Dec. 1919)



Corner in the new kitchen (which came into use Dec. 1919)



## SANATORIUM AND HOSPITAL TREATMENT.

Patients discharged during 1919 were given in all 62,055 days' treatment as follows:

Sanatorium, ambulant treatment, no bed care....	33,739	days
Part infirmary or hospital treatment, some bed care .....	3,557	"
Full infirmary treatment, full bed routine.....	20,825	"
Extra infirmary treatment, close bed care.....	3,934	"
<b>Total .....</b>	<b>62,055</b>	<b>days</b>

### WEIGHT.

Of 419 patients of all classes, 271 (or 65%) gained a total of 2,179¼ lbs., an average of 8 lbs.; 76 (or 18%) lost a total of 436¼ lbs., an average of 5¾ lbs.; 72 (or 17%) neither gained nor lost or were not weighed on discharge.

### STANDARDS OF CLASSIFICATION ON ADMISSION.

#### Lesion.

**Incipient.**—Slight infiltration limited to the apex of one or both lungs, or a small part of one lobe.

No tuberculous complications.

**Moderately advanced.**—Marked infiltration more extensive than under incipient, with little or no evidence of cavity formation.

No serious tuberculous complications.

**Far Advanced.**—Extensive localized infiltration or consolidation in one or more lobes.

Or disseminated areas of cavity formation.

Or serious tuberculous complications.

**Apparently hopeless.**

#### Symptoms.

**A. (Slight or none)**—Slight or no constitutional symptoms, including particularly gastric or intestinal disturbance, or rapid loss of weight; slight or no elevation of temperature or acceleration of pulse at any time during the twenty-four hours.

Expectoration usually small in amount, or absent.

Tubercle bacilli may be present or absent.

**B. (Moderate)**—No marked impairment of function, either local or constitutional.

**C. (Severe)**—Marked impairment of function, local and constitutional.

### CLASSIFICATION ON DISCHARGE.

The classification on discharge is as follows:

**Apparently Cured**—All constitutional symptoms and expectoration with bacilli absent for a period of two years under ordinary conditions of life.

**Arrested**—All constitutional symptoms and expectoration with bacilli absent for a period of three months; the physical signs to be those of a healed lesion.

**Quiescent**—Absence of all constitutional symptoms; expectoration and bacilli may or may not be present; physical signs stationary or retrogressive; the foregoing conditions to have existed for at least two months.

**Improved**—Constitutional symptoms lessened or entirely absent; physical signs improved or unchanged; cough and expectoration with bacilli usually present.

**Unimproved or Progressive**—All essential symptoms and signs unabated or increased.

### NON-TUBERCULOUS.

Of the patients discharged during 1919, 57 civilians and 66 military patients were classed as **Non-Tuberculous**. All were kept for diagnosis, some for farther observation, and some for treatment. They were discharged as follows:

#### Non-Tuberculous—Civilians.

On discharge classed as	REMAINED UNDER TREATMENT				Total	Per Cent
	Average in weeks	Less than 1 month	1-3 months	Over 3 months		
Recovered (Influenza) ..	4.7	2	3	....	5	8.8
Untreated .....	1.0	8	....	....	8	14.0
Quiescent .....	17.5	....	....	6	6	10.5
Improved .....	7.2	8	22	3	33	57.9
Unimproved .....	4.4	3	1	....	4	7.0
Died .....	13.0	....	....	1	1	1.8
	Whole Av'ge					
	7.1	21	26	10	57	100.0

**Gain of Weight**—36 (or 64%) gained a total of 219 lbs., an average of 6 lbs.; 7 (or 12%) lost a total of 10¾ lbs., an average of 1½ lbs.; 14 (or 24%) were not weighed.

Some bed care was required by 25; 18 had no bed care.

#### Non-Tuberculous—Military.

On discharge classed as	REMAINED UNDER TREATMENT				Total	Per Cent
	Average in weeks	Less than 1 month	1-3 months	Over 3 months		
Recovered .....	62.5	....	....	1	1	1.5
Untreated .....	.7	7	....	....	7	10.7
Quiescent .....	14.7	....	2	2	4	6.0
Improved .....	8.4	17	25	9	51	77.3
Unimproved .....	11.3	....	1	1	2	3.0
Died .....	23.4	....	....	1	1	1.5
	Whole Av'ge					
	9.1	24	28	14	66	100.0



**Gain of Weight**—45 (or 68%) gained a total of 221½ lbs., an average of 4¾ lbs.; 12 (or 18%) lost a total of 34¾ lbs., an average of 2¾ lbs.; 9 (or 14%) were not weighed.

Some bed care was required by 4; 62 had no bed care.

### TUBERCULOUS—NON-PULMONARY.

Of the patients discharged during 1919, 6 civilian and 3 military patients were classed on admission as **Tuberculous, Non-Pulmonary**. They were discharged as follows:

#### Tuberculous, Non-Pulmonary—Civilian.

On discharge classed as	REMAINED UNDER TREATMENT				Total	Per Cent
	Average in weeks	Less than 1 month	1-3 months	Over 3 months		
Apparently Arrested .....	30.2	---	---	2	2	33.3
Quiescent .....	142.0	---	---	1	1	16.7
Improved .....	17.2	---	1	1	2	33.3
Died .....	4.1	---	1	---	1	16.7
	Whole Av'ge	---	2	4	6	100.0
	40.2	---	2	4	6	100.0

**Gain of Weight**—2 (or 33%) gained a total of 33¾ lbs., an average of 16¾ lbs.; 3 (or 50%) lost a total of 5½ lbs., an average of 1¾ lbs.; 1 (or 17%) was not weighed on discharge.

Some bed care was required by 5; 1 had no bed care.

#### Tuberculous, Non-Pulmonary—Military.

On discharge classed as	REMAINED UNDER TREATMENT				Total	Per Cent
	Average in weeks	Less than 1 month	1-3 months	Over 3 months		
Quiescent .....	31.7	---	---	1	1	33.3
Improved .....	12.2	1	---	1	2	66.6
	Whole Av'ge	1	---	2	3	99.9
	18.7	1	---	2	3	99.9

**Gain of Weight**—3 (or 100%) gained a total of 9 lbs., an average of 3 lbs.

No bed care was required.

### INCIPIENT.

Of the patients discharged during 1919, 18 civilians and 20 military patients had been classed on admission as **Incipient, Class A**. They were discharged as follows:

### Incipient, Class A—Civilian.

On discharge classed as	REMAINED UNDER TREATMENT				Total	Per Cent
	Average in weeks	Less than 1 month	1-3 months	Over 3 months		
Apparently Arrested .....	12.8	---	---	3	3	16.7
Quiescent .....	16.1	---	3	3	6	33.3
Improved .....	5.8	4	4	1	9	50.0
	Whole Av'ge	4	7	7	18	100.0
	13.5	4	7	7	18	100.0

**Gain of Weight**—18 (or 100%) gained a total of 139¼ lbs., an average of 7¾ lbs.

Some bed care was required by 6; 12 had no bed care.

### Incipient, Class A—Military.

On discharge classed as	REMAINED UNDER TREATMENT				Total	Per Cent
	Average in weeks	Less than 1 month	1-3 months	Over 3 months		
Untreated .....	.8	2	---	---	2	10.0
Quiescent .....	17.7	---	2	2	4	20.0
Improved .....	6.7	5	7	2	14	70.0
	Whole Av'ge	7	9	4	20	100.0
	15.4	7	9	4	20	100.0

**Gain of Weight**—16 (or 80%) gained a total of 84¼ lbs., an average of 5¼ lbs.; 4 (or 20%) were not weighed on discharge.

No bed care was required.

### MODERATELY ADVANCED.

Of the patients discharged during 1919, 11 civilians had been classed on admission as **Moderately Advanced, Class A**; and 13 as **Moderately Advanced, Class B**. 20 military patients had been classed on admission as **Moderately Advanced, Class A**; and 10 as **Moderately Advanced, Class B**. They were discharged as follows:

#### Moderately Advanced, Class A—Civilian.

On discharge classed as	REMAINED UNDER TREATMENT				Total	Per Cent
	Average in weeks	Less than 1 month	1-3 months	Over 3 months		
Untreated .....	.7	1	---	---	1	9.0
Apparently Arrested .....	71.0	---	---	2	2	18.2
Quiescent .....	21.3	---	---	2	2	18.2
Improved .....	3.0	5	1	---	6	54.2
	Whole Av'ge	6	1	4	11	100.0
	18.6	6	1	4	11	100.0

**Gain of Weight**—10 (or 91%) gained a total of 72½ lbs., an average of 7¼ lbs.; 1 (or 9%) was not weighed.

1 required some bed care; 10 had no bed care.



**Moderately Advanced, Class A—Military.**

On discharge classed as	REMAINED UNDER TREATMENT				Total	Per Cent
	Average in weeks	Less than 1 month	1-3 months	Over 3 months		
Untreated .....	.6	1	---	---	1	5.0
Quiescent .....	15.1	---	4	5	9	45.0
Improved .....	6.7	3	6	1	10	50.0
	Whole Av'ge					
	10.2	4	10	6	20	100.0

**Gain of Weight**—18 (or 90%) gained a total of 109¾ lbs., an average of 6 lbs.; 1 (or 5%) lost 2½ lbs.; 1 (or 5%) was not weighed on discharge.

No bed care was required.

**Moderately Advanced, Class B—Civilian.**

On discharge classed as	REMAINED UNDER TREATMENT				Total	Per Cent
	Average in weeks	Less than 1 month	1-3 months	Over 3 months		
Quiescent .....	28.2	---	2	5	7	53.8
Improved .....	9.4	---	4	1	5	38.5
Unimproved .....	30.0	---	---	1	1	7.7
	Whole Av'ge					
	21.6	---	6	7	13	100.0

**Gain of Weight**—11 (or 85%) gained a total of 118 lbs., an average of 10¾ lbs.; 2 (or 15%) lost a total of 28 lbs., an average of 14 lbs.

Some bed care was required by 6; 7 had no bed care.

**Moderately Advanced, Class B—Military.**

On discharge classed as	REMAINED UNDER TREATMENT				Total	Per Cent
	Average in weeks	Less than 1 month	1-3 months	Over 3 months		
Quiescent .....	33.4	---	1	6	7	70.0
Improved .....	2.3	---	1	1	2	20.0
Unimproved .....	43.1	---	---	1	1	10.0
	Whole Av'ge					
	32.8	---	2	8	10	100.0

**Gain of Weight**—8 (or 80%) gained a total of 93¼ lbs., an average of 11½ lbs.; 2 (or 20%) lost a total of 14¾ lbs., an average of 7¼ lbs.

Some bed care was required by 9; 1 had no bed care.

**FAR ADVANCED.**

Of the patients discharged during 1919, 13 civilians had been classed on admission as **Far Advanced, Class A.**; 25 as **Far Advanced, Class B.**; and 55 as **Far Advanced, Class C.** 24 military patients had been classed as **Far Advanced, Class A.**; 24 as **Far Advanced, Class B.**; and 11 as **Far Advanced, Class C.** These were discharged as follows:

**Far Advanced, Class A—Civilian.**

On discharge classed as	REMAINED UNDER TREATMENT				Total	Per Cent
	Average in weeks	Less than 1 month	1-3 months	Over 3 months		
Untreated .....	.4	1	---	---	1	7.6
Quiescent .....	23.4	---	1	6	7	53.8
Improved .....	8.2	1	3	1	5	38.6
	Whole Av'ge					
	15.9	2	4	7	13	100.0

**Gain of Weight**—11 (or 85%) gained a total of 95½ lbs., an average of 8¾ lbs.; 2 (or 15%) were not weighed on discharge.

No bed care was required.

**Far Advanced, Class A—Military.**

On discharge classed as	REMAINED UNDER TREATMENT				Total	Per Cent
	Average in weeks	Less than 1 month	1-3 months	Over 3 months		
Untreated .....	.6	3	---	---	3	12.5
Quiescent .....	32.8	---	2	10	12	50.0
Improved .....	5.9	4	5	---	9	37.5
	Whole Av'ge					
	18.6	7	7	10	24	100.0

**Gain of Weight**—17 (or 70%) gained a total of 121½ lbs., an average of 17¼ lbs.; 3 (or 13%) lost a total of 5¾ lbs., an average of 1¾ lbs.; 4 (or 17%) were not weighed on discharge.

Some bed care was required by 1; 23 had no bed care.

**Far Advanced, Class B—Civilian.**

On discharge classed as	REMAINED UNDER TREATMENT				Total	Per Cent
	Average in weeks	Less than 1 month	1-3 months	Over 3 months		
Untreated .....	.7	1	---	---	1	4.0
Quiescent .....	44.3	---	---	8	8	32.0
Improved .....	28.8	1	6	8	15	60.0
Unimproved .....	94.7	---	---	1	1	4.0
	Whole Av'ge					
	35.3	2	6	17	25	100.0



**Gain of Weight**—18 (or 72%) gained a total of 215 lbs., an average of 12 lbs.; 6 (or 24%) lost a total of 43<sup>3</sup>/<sub>4</sub> lbs., an average of 7<sup>1</sup>/<sub>4</sub> lbs.; 1 (or 4%) was not weighed on discharge.

Some bed care was required by 17; 5 had no bed care.

**Far Advanced, Class B—Military.**

On discharge classed as	REMAINED UNDER TREATMENT				Total	Per Cent
	Average in weeks	Less than 1 month	1-3 months	Over 3 months		
Quiescent .....	61.7	---	---	11	11	45.8
Improved .....	50.8	1	---	10	11	45.8
Unimproved .....	25.0	---	---	1	1	4.2
Died .....	93.7	---	---	1	1	4.2
	Whole Av'ge	1	---	23	24	100.0

**Gain of Weight**—17 (or 71%) gained a total of 234<sup>1</sup>/<sub>2</sub> lbs., an average of 13<sup>3</sup>/<sub>4</sub> lbs.; 7 (or 29%) lost a total of 35 lbs., an average of 5 lbs.

Some bed care was required by 17; 7 had no bed care.

**Far Advanced, Class C—Civilian.**

On discharge classed as	REMAINED UNDER TREATMENT				Total	Per Cent
	Average in weeks	Less than 1 month	1-3 months	Over 3 months		
Quiescent .....	34.7	---	---	8	8	14.5
Improved .....	29.0	2	3	20	25	45.5
Unimproved .....	20.3	---	4	9	13	23.6
Died .....	83.4	---	---	9	9	16.4
	Whole Av'ge	2	7	46	55	100.0

**Gain of Weight**—37 (or 68%) gained a total of 386<sup>3</sup>/<sub>4</sub> lbs., an average of 10<sup>1</sup>/<sub>2</sub> lbs.; 15 (or 27%) lost a total of 141<sup>1</sup>/<sub>2</sub> lbs., an average of 6<sup>1</sup>/<sub>4</sub> lbs.; 3 (or 5%) were not weighed on discharge.

All required full bed care.

**Far Advanced, Class C—Military.**

On discharge classed as	REMAINED UNDER TREATMENT				Total	Per Cent
	Average in weeks	Less than 1 month	1-3 months	Over 3 months		
Quiescent .....	32.6	---	---	2	2	18.2
Improved .....	40.4	---	2	3	5	45.4
Unimproved .....	30.3	---	---	1	1	9.1
Died .....	49.3	---	1	2	3	27.3
	Whole Av'ge	---	3	8	11	100.0

**Gain of Weight**—2 (or 18%) gained a total of 21<sup>1</sup>/<sub>2</sub> lbs., an average of 10<sup>3</sup>/<sub>4</sub> lbs.; 6 (or 55%) lost a total of 37<sup>1</sup>/<sub>4</sub> lbs., an average of 6<sup>1</sup>/<sub>4</sub> lbs.; 3 (or 27%) were not weighed on discharge.

All required full bed care.

**APPARENTLY HOPELESS.**

Of the patients discharged during 1919, 29 civilian and 14 military patients had been classed on admission as **Apparently Hopeless.** These were discharged as follows:

**Apparently Hopeless—Civilian.**

On discharge classed as	REMAINED UNDER TREATMENT				Total	Per Cent
	Average in weeks	Less than 1 month	1-3 months	Over 3 months		
Unimproved .....	10.8	2	6	3	11	38.0
Died .....	22.5	3	5	10	18	62.0
	Whole Av'ge	5	11	13	29	100.0

**Gain of Weight**—2 (or 7%) gained a total of 41<sup>1</sup>/<sub>2</sub> lbs., an average of 2<sup>1</sup>/<sub>4</sub> lbs.; 9 (or 31%) lost a total of 44 lbs., an average of 4<sup>3</sup>/<sub>4</sub> lbs.; 18 (or 62%) were not weighed on discharge.

Full bed care was required by all.

**Apparently Hopeless—Military.**

On discharge classed as	REMAINED UNDER TREATMENT				Total	Per Cent
	Average in weeks	Less than 1 month	1-3 months	Over 3 months		
Unimproved .....	38.3	---	---	3	3	21.4
Died .....	21.7	2	3	6	11	78.6
	Whole Av'ge	2	3	9	14	100.0

**Gain of Weight**—3 (or 21%) lost a total of 33<sup>1</sup>/<sub>2</sub> lbs., an average of 11 lbs.; 11 (or 79%) were not weighed on discharge.

Full bed care was required by all.



## MUNICIPALITIES

Patients admitted to the Sanatorium in 1919 were from the following municipalities:—

Albert	1	Neepawa Town	2
Alberta Province	1	Norfolk N.	6
Archie	2	Norfolk S.	4
Argyle	2	Nova Scotia Province	
Assiniboia	15	Ontario Province	17
Beausejour Village	2	Oakland	1
Bifrost	6	Odanah	1
Birtle Village	1	Pembina	2
Blanshard	3	Pipestone	1
Boissevain Town	2	Pilot Mound Village	1
Brandon City	18	Portage la Prairie, R.	8
Brenda	1	Portage la Prairie, C.	7
Brokenhead	1	Rockwood	3
Cameron	1	Roland	3
Carman Town	3	Rosedale	3
Carberry Town	1	Rosser	1
Charleswood	3	Rosburn	3
Coldwell	3	Rosburn Village	1
Cornwallis	1	Russell	2
Cypress N.	2	Saskatchewan	1
Cypress S.	1	Saskatchewan Province	1
Daly	1	Selkirk Town	1
Dauphin Town	1	Shellmouth	1
De Salaberry	2	Shell River	1
Dufferin	1	Shoal Lake Village	1
Elm Creek Village	1	Stanley	1
Ellice	1	Stonewall Town	1
Emerson Town	2	Strathcona	6
Ericksdale	2	Swan River	4
Ethelbert	2	St. Andrews	4
Fort Garry	1	St. Boniface City	5
Gilbert Plains	2	St. Clements	2
Gladstone Town	2	St. Pauls	1
Grandview	2	St. Rose	3
Gretna Village	1	St. Vital	2
Hanover	1	Stuartburn	1
Harrison	2	Transcona Town	4
Hillsburg	1	Unorganized Territory	8
Kildonan East	2	Virden Town	1
Kildonan West	4	Wallace	2
Kreuzberg	1	Westbourne	5
Langford	1	Whitehead	1
Le Pas	6	Whitewater	1
Lorne	5	Whytefold	1
Louise	5	Woodworth	1
Miniota	1	Woodlands	3
Minnedosa Town	1	Winnipegosis	3
Minto	4	Winnipeg City	203
Montcalm	1		
Mossy River	1		
Macdonald	2		
			465

## OCCUPATIONS

The occupations of patients admitted to the Sanatorium during the year 1919 were as follows:—

Agents	4	Laborers	21
Army Chaplains	2	Letter Carriers	2
Bakers	1	Linemen	1
Blacksmiths	2	Machinists	4
Bookkeepers	1	Merchants	1
Bookbinders	1	Motormen	1
Builders	1	Orderlies	1
Business Managers	2	Printers	2
Butchers	1	Physicians	1
Caretakers	2	Roofers	1
Carpenters	2	Salesmen	3
Clerks, store	8	School Boys	5
Clerks, office	8	School Girls	9
Clerks, laboratory	1	Shippers	2
Conductors	1	Soldiers	206
Cooks	2	Steamfitters	1
Domestics	12	Stenographers	6
Dressmakers	1	Students	9
Electricians	1	Tailors	1
Evangelists	1	Teachers, School	8
Engineers, Marine	1	Teachers, Music	1
Engineers, Stationary	1	Teamsters	1
Farmers	31	Telephone Operators	6
Firemen	1	Tinsmiths	1
Glovemakers	1	Waiters	1
Housekeepers	1	No Occupation	20
Housewives	60		
Jewellers	1		465

## NATIVITY

The patients admitted to the Sanatorium during the year 1919 are classed as to nativity as follows:—

Canada	217	Iceland	6
England	83	Italy	3
Scotland	49	Norway	3
Ireland	20	Poland	8
Wales	2	Roumania	1
United States	20	Russia	4
Austria	15	Sweden	9
Austria Ruthenians	5	Russia Jews	
Belgium	3	France	4
China	1	Switzerland	2
Denmark	1	Ukrania	1
Finland	1		
Germany	2		465
Holland	1		



## DONATIONS OF CASH AND ARTICLES FOR SPECIAL PURPOSES.

(Cash donated for general maintenance of the Sanatorium acknowledged elsewhere.)

**Library Books, Papers, Magazines, etc.:** Cornish Library; Mrs. Earle, Elkhorn; Mr. H. Chevrier, Winnipeg; Max Major, Editor Polish Times, Winnipeg; Mr. and Mrs. Findlater, Mrs. Stoughton and Ladies of Gilbert Plains; Mr. McMunn, Winnipeg; and others.

**Plants, Cut Flowers, Floral Decorations, etc.:** Patmore Nurseries, Brandon; W. M. S., Gilbert Plains; Anglican Mission of Stockton, Glenboro and Baldur; Mr. and Mrs. Findlater and Mrs. Stoughton of Gilbert Plains; Kipling Chapter I.O.D.E., and others.

**Clothing and Funds for Equipment and Comforts for Soldier and Civilian Patients:** Teachers' Club, Carlton School Winnipeg; Brandon School Sewing Society; Portage la Prairie I.O.D.E., Carman Soldiers' Benefit Society; Glenwood Red Cross Auxiliary; Mrs. Standing, Winnipeg; 43rd Cameron Highlanders' Auxiliary, Winnipeg; Canadian Engineers' Auxiliary, Winnipeg; Canadian Field Comforts Commission; Kitchener Patriotic Sewing Club, Virden; Clearwater "Needles," Clearwater; Kitchener Club, Scarth; Garrison Chapter I.O.D.E., Winnipeg; W. C. T. U., Manitou; Miss Hanford, Snowflake; University Units Auxiliary, Winnipeg; Women's Auxiliary of the C.A.M.C.; Homewood Soldiers' Aid Society; Glenwood and Souris Red Cross Auxiliary; Young Methodist Church; Brandon Home Fires Council; Winnipeg Women's Teachers' Club; Crystal City War Relief Society; Elgin Patriotic Society; 8th Battalion Auxiliary; Women's Service League; Kipling Chapter I.O.D.E., R.A.F. Auxiliary; Oak River Patriotic Society; 106th and 226th Auxiliary; Manitoba W.C.T.U.; Manitoba Red Cross Society, Winnipeg; Brandon Red Cross Society; and others.

**Musical Instruments, Gramophones, Records, Games, etc.:** Mrs. Llewellyn, England; Manitoba Red Cross Society; Mrs. W. A. Muirhead, Douglas, Man.; Brandon Red Cross Society, and others.

**Donations to Provide Christmas Cheer for Soldier and Civilian Patients:** Donations of Cash—Ypres I.O.D.E., McAuley, Man.; Brandon Hills Busy Bees; John Yellowless; R. C. Scott; Mrs. Wilson; Mons Chapter I.O.D.E.; Shoal Lake; Girls of the Allies Club, Winnipeg; Miss LePage; Miss Gemmill; Mr. W. A. Windatt; Brandon I.O.D.E.

**Donation of Other Articles for Christmas Cheer:** Mr. and Mrs. Cox; Mr. Hughes; Mrs. Jackson; W. F. C. Brathwaite; Mr. McKinney; Hudson Bay Co., Knights of Columbus; Brandon Red Cross Society and others.

**Fruit, Preserves, etc.:** Brandon I.O.D.E.; Scott Fruit Co., Brandon Red Cross Society; Manitoba Red Cross Society; Miss Lillie Johnson, Norwood; Winnipeg District W.C.T.U.; 106th and 222nd Auxiliary; Kipling Chapter I.O.D.E.; Girls of Paris Bldg. and others.

A number of gifts of various kinds were sent anonymously or without indication of names of donors, and to those who thus sent the thanks of the Board are extended.

## WEATHER CONDITIONS.

Some meteorological observations are made at the Sanatorium, but the following table gives the more complete data of the Experimental Farm Station at Brandon, forty-five miles from Ninette.

	Jan.	Feb.	Mar.	April	May	June	July	Aug.	Sept.	Oct.	Nov.	Dec.	Mean for Year.
TEMPERATURE, Highest	38.	37.9	44.9	69.9	80.4	88.2	101.5	102.	87.	82.	61.6	32.5	35.
	1915	32.	52.1	87.2	83.2	85.	86.5	94.7	94.5	71.	61.	33.	35.
	1916	18.2	41.	65.1	78.1	80.	92.5	97.	81.5	72.	60.5	44.5	35.
	1917	38.	30.	42.1	56.	93.	101.2	94.	90.4	71.	61.3	34.9	35.
	1918	28.5	39.5	64.2	74.	101.8	97.	87.	80.	70.2	48.8	36.5	35.
	1919	36.5	37.	39.	64.8	95.7	95.	96.	85.5	72.	42.	38.	35.
“ Lowest	1914	-37.6	-46.4	-20.8	5.8	19.8	31.5	42.5	29.	26.6	-27.8	-31.8	2.7
	1915	-42.5	-20.	-15.8	15.	20.	31.5	36.5	26.	26.2	-17.	-27.8	2.7
	1916	-51.2	-38.	-38.	-1.	20.1	30.0	37.	33.5	22.	-7.9	-40.2	2.7
	1917	-49.	-44.	-27.	13.	19.8	26.	32.5	29.	21.2	15.	-40.	2.7
	1918	41.	-38.	-6.5	12.	11.	32.	37.	37.8	26.	2.9	-36.	2.7
	1919	-35.2	-38.3	-29.5	10.8	29.	41.	33.	2.4	-11.	27.1	35.	2.7
“ Mean	1914	3.3	-9.9	19.2	35.9	45.6	57.6	60.5	55.1	47.	22.1	8.3	34.28
	1915	-1.	14.1	23.1	46.4	47.	55.6	60.5	50.8	42.4	20.8	8.3	36.05
	1916	-13.0	-1.6	7.7	34.7	48.9	56.2	66.8	60.1	52.1	35.8	24.1	31.4
	1917	-9.8	-6.8	20.3	32.1	47.1	58.1	67.2	62.2	55.1	31.8	33.3	32.03
	1918	-4.0	.9	28.	41.5	46.1	60.8	60.6	46.4	42.3	26.1	10.	34.87
	1919	10.1	4.3	9.3	37.7	55.7	65.2	66.8	64.8	52.7	12.8	-5.2	33.65
													Total for Year.
PRECIPITATION (Inches of Water)	1914	1.6	.3	.1	.25	2.28	2.38	1.91	1.02	2.45	1.54	.73	14.66
	1915	.70	.20	.40	1.07	1.28	3.81	2.34	.18	3.29	.64	1.1	16.61
	1916	2.70	.40	1.90	.92	1.59	4.33	2.63	2.22	2.39	2.36	.15	22.49
	1917	2.00	.90	.10	1.10	.14	1.76	1.26	.78	1.68	.22	.15	10.49
	1918	.30	.90	.67	.67	2.39	.97	2.47	2.09	1.33	1.01	1.25	14.55
	1919	.20	.60	.90	1.53	1.60	3.57	2.14	1.38	1.62	.84	.50	15.68
BRIGHT SUNSHINE (Hours)	1914	73.5	134.2	114.	141.6	196.1	179.6	267.1	239.	208.9	157.8	104.3	1898.5
	1915	98.5	85.8	193.3	164.2	225.4	164.8	202.5	257.1	106.9	180.7	74.6	1826.7
	1916	99.4	143.7	137.4	175.4	187.5	189.6	259.3	260.6	177.1	108.	132.9	1986.2
	1917	88.7	125.5	123.5	147.7	293.5	227.7	283.7	261.8	179.1	110.2	123.2	2060.8
	1918	93.0	132.3	167.3	195.	172.6	202.	225.	221.6	211.	141.4	74.1	1887.8
	1919	114.1	117.6	127.0	173.5	247.1	228.7	283.4	250.6	144.4	145.9	169.4	2026.6

Average daily bright sunshine, 1914, 5.2 hours; 1915, 5.0 hours; 1916, 5.15 hours; 1917, 5.64 hours; 1918, 5.17 hours; 1919, 5.55 hours; 1914, 19, 5, 285 hours



## AUDITORS' REPORT.

30th December, 1919.

The Chairman and Members,  
Board of Trustees, Manitoba Sanatorium.

Gentlemen:—

We duly received notification from your Board of the changing of the fiscal year to November 30th, and in accordance therewith have made an audit of the books, vouchers and accounts of the Sanatorium for the 8 months, 1st April, 1919, to 30th, November, 1919, and present herewith for your consideration the following statements covering the operations for the period.

**Exhibit A**—Balance Sheet as at 30th November, 1919.

**Exhibit B**—Statement of Income and Expenditure, Maintenance Account.

**Exhibit C**—Statement of Income and Expenditure, Capital Account.

**Exhibit D**—Summarized Statement of Cash Receipts and Disbursements.

**Schedule No. 1**—Cash Donations.

**Schedule No. 2**—Summary of Inventories at at 30th November, 1919.

**Schedule No. 3**—Farm Account.

The attached statement of Revenue and Expenditure (Maintenance Account) shows a deficit on the operations for the period of \$9,602.37, while the nominal surplus of Assets over Liabilities shows a net increase of \$43,285.43 over that of the period ending 31st March, 1919.

This increase in surplus is wholly on Capital Account and has been derived from the following sources:

From Dominion Hospital Commission on account of Capital Expenditure .....	\$52,887.80
Less: Deficit on Maintenance Account .....	9,602.37
	\$43,285.43

The increases or decreases in the various assets and liabilities during the period are shewn by the following statement:

31st March, 1919	ASSETS	30th November, 1919
\$456,499.06	Land Buildings, Plant and Equipment (less Depreciation) .....	\$520,228.94
	Receiv- ables ..	\$64,156.10
	16,241.71	Invent- ories etc. 11,632.44
52,608.16		75,788.54
\$518,107.22		\$596,017.48
	LIABILITIES	
\$ 14,882.03	Payables .....	\$ 19,249.57
30,754.90	Overdraft .....	61,012.19
\$ 45,636.93	Total Liabilities .....	\$ 80,261.76
	Surplus of Assets over Liabilities .....	515,755.72
472,470.29		515,755.72
\$518,107.22		\$596,017.48

Following we give a comparison of the Per Capita Costs and the Per Capita Earnings for the period 1st April, 1919, to 30th November, 1919, with the two preceding fiscal periods:

	1st April, 1919 to 30th Nov., 1919	1918-19	1917-18
Hospital Days .....	48,866	62,253	61,051
<b>Expenditure:</b>			
Maintenance .....	2.459	2.154	1.638
Administration ....	.133	.110	.104
	2,592	2,264	1,742
Depreciation .....	.500	.358	.278
	3.092	2.622	2.020
Total .....			
<b>Income:</b>			
Hospital .....	2.371	2.141	1.808
Other .....	.525	.360	.060
	2.896	2.501	1.868
Total .....			

The Depreciation and Insurance owing to the change in the fiscal year have, of course, only been figured at two-thirds of the annual charge.

The costing system which your Board instructed us to instal is under way and a report of the operations for the month of December will be furnished you early next month.

Reported by,  
W. A. HENDERSON & CO.



**CAPITAL ACCOUNT.**  
**STATEMENT OF INCOME AND EXPENDITURE**  
 for 8 Months ending 30th November, 1919.

**INCOME**

Dominion Hospital Commission.....	\$ 52,887.80
Sale of Hotel Property .....	1,850.00
	\$ 54,737.80

**EXPENDITURE**

**LAND, BUILDINGS, PLANT AND EQUIPMENT:**

**Land:**

Improvements .....	\$ 745.66
--------------------	-----------

**Buildings:**

Alterations and Improve- ments .....	3,070.57
New Infirmary Buildings, etc.	62,623.20
Old Hotel Building Ninette..	1,249.90

<b>Plant and Machinery .....</b>	<b>639.14</b>
----------------------------------	---------------

<b>Water and Sewage, Wells, etc.</b>	<b>2,815.42.....</b>
--------------------------------------	----------------------

**Furniture and Equipment:**

Equipment .....	6,946.92
Furniture .....	826.08

78,916.89

Excess of Expenditure over Income .....	24,179.09
Overdraft, 31st March, 1919	30,466.90

**\$ 54,645.99**

**CASH ACCOUNT.**  
**SUMMARISED STATEMENT OF RECEIPTS**  
**AND DISBURSMENTS**  
 for 8 Months ending 30th November, 1919

**RECEIPTS**

**Maintenance Account:**

Patients (Private and Cities) .....	\$62,445.50
Municipal Levy (Part of this for treatment of pa- tients) .....	25,000.00
Farm Produce .....	358.90
Per Capita Grant (1918) .....	24,865.60
Subscriptions and Donations .....	1,060.00
Outdoor Treatment..	10.00
Insurance, Refund by I.S.C. ....	1,618.24
Miscellaneous .....	1,911.77
	\$117,270.01

**Capital Account:**

Dominion Hospital Commission .....	\$52,887.80
Sale of Hotel Pro- perty .....	1,850.00
	54,737.80

Total Receipts ..... \$172,007.81

**Overdraft 30th November, 1919:**

Current Account .....	\$ 6,366.20
Capital Account .....	54,645.99
	61,012.19
	\$233,020.00

**DISBURSEMENTS**

Vouchers Paid During Year .....	\$202,265.10
Overdraft 31st March, 1919 .....	30,754.90
	\$233,020.00



## SCHEDULES.

### SCHEDULE NO. 1.

#### Cash Donations 1919.

Annie Jones .....	\$	20.00	
Provincial Government (Premium on Sale of Debentures .....		1,040.00	
			\$ 1,060.00

### SCHEDULE NO. 2.

#### Summary of Inventories

Stores on Hand .....	\$	2,703.24	
Fuel .....		817.50	
Gasoline (Light, Water and Ice) .....		88.66	
X Ray Supplies .....		143.16	
Hay, Oats and Live Stock .....		1,102.50	
Stationery, etc. ....		210.00	
Laundry Supplies .....		123.62	
Dispensary .....		1,019.39	
Sundry Supplies .....		828.98	
			\$ 7,037.05

### SCHEDULE NO. 3.

#### Farm Account

##### Credit:

Produce Sold During Year .....	\$	358.90	
Produce used by Sanatorium....		1,487.45	
			\$ 1,846.35

##### Debit:

Inventory 31st March, 1919 .....	\$	587.00	
Wages, Expenses and Supplies Chargeable for Year .....		2,019.87	
			2,606.87
Less: Inventory of Produce 30th November, 1919 .....		1,102.50	
			1,504.37
Surplus for Year .....	\$		341.98